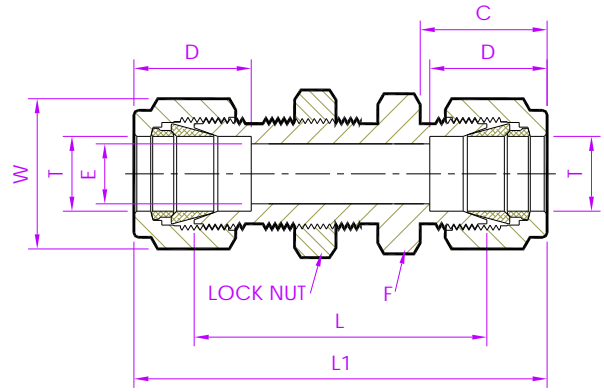


**- Tube Fitting (Double Ferrule)-  
Tube To Tube**

# Bulkhead Union



Fractional Tube x Fractional Tube

Tubefit Part No.	Equivalent Part No. Type 1	Equivalent Part No. Type 2	TUBE OD Ø T	ØE	D	C	L	L1	Body Hex F	Nut Hex W
Dimensions in Inches										
<b>1 - BUD</b>	- 100 - 61	1BC1	1/16	0.05	0.34	0.43	0.84	1.24	5/16	5/16
<b>2 - BUD</b>	- 200 - 61	2BC2	1/8	0.09	0.50	0.60	1.50	2.02	7/16	7/16
<b>3 - BUD</b>	- 300 - 61	3BC3	3/16	0.12	0.54	0.63	1.59	2.11	7/16	1/2
<b>4 - BUD</b>	- 400 - 61	4BC4	1/4	0.19	0.60	0.70	1.69	2.27	9/16	9/16
<b>5 - BUD</b>	- 500 - 61	5BC5	5/16	0.25	0.64	0.73	1.81	2.39	9/16	5/8
<b>6 - BUD</b>	- 600 - 61	6BC6	3/8	0.28	0.66	0.76	1.87	2.45	5/8	11/16
<b>8 - BUD</b>	- 810 - 61	8BC8	1/2	0.41	0.90	0.86	2.00	2.80	7/8	7/8
<b>10 - BUD</b>	- 1010 - 61	10BC10	5/8	0.50	0.96	0.86	2.06	2.86	1	1
<b>12 - BUD</b>	- 1210 - 61	12BC12	3/4	0.63	0.96	0.86	2.31	3.11	1.1/16	1.1/8
<b>14 - BUD</b>	- 1410 - 61	14BC14	7/8	0.72	1.02	0.86	2.53	3.33	1.3/16	1.1/4
<b>16 - BUD</b>	- 1610 - 61	16BC16	1	0.88	1.23	1.04	2.81	3.77	1.3/8	1.1/2

NOTE: 1)The E Dimension is the minimum opening. 2)Dimension L1, D is shown in the finger-tight position.  
3)Dimensions are for reference only and are subject to change

**- ALL PART NUMBERS ARE PROPRIETARY OF THEIR RESPECTIVE OWNERS. -**